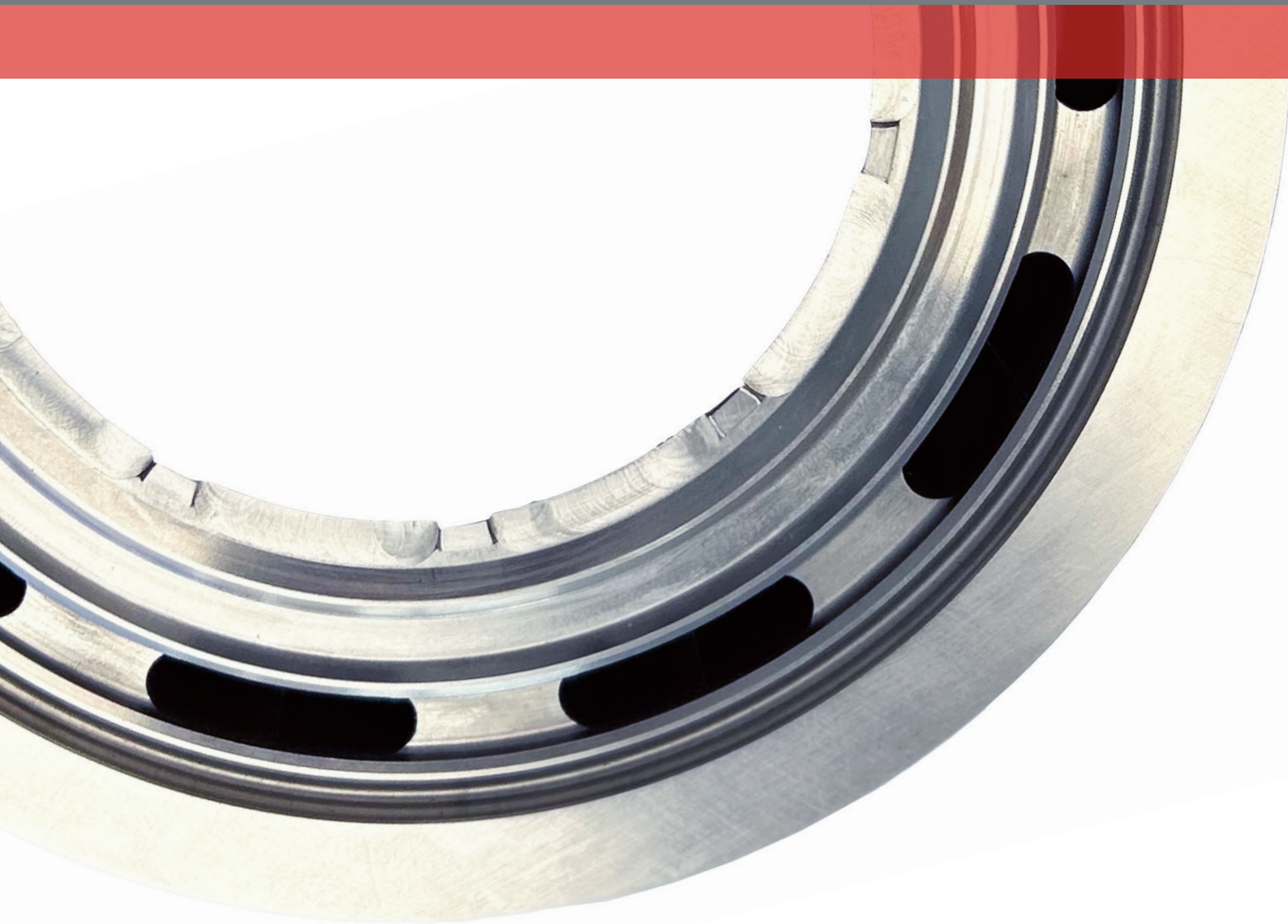


PRECISION COMPONENTS HOMOGENISERS



WALLCOLMONOY
PRECISION COMPONENTS

CAST AND MACHINED COMPONENTS FOR HOMOGENISERS

Wall Colmonoy's engineered components have been specifically made from Wallex® (cobalt) to withstand corrosion and abrasion in high temperature, high velocity environments encountered during the homogenisation process.

Based in Wales, Wall Colmonoy Limited (UK) has a state-of-the art foundry and machining facility that produces castings, heat treatment and full component manufacture - all from one source.

Developed to maximise operational efficiency, Wall Colmonoy's homogeniser components are cast in Wallex® (cobalt), a tough wear resistant alloy and then finish machined. With a service life typically several times longer than stainless steel, we offer a high-quality solution for those in mixing, emulsifying and homogenising industries.

Industries include:

- Food Processing "Dairy"
- Plant Based Food
- Cosmetics
- Biotechnology
- Pharmaceuticals



Coated Piston

Wallex® has superior abrasion and corrosion resistant properties, that equips Wall Colmonoy's homogeniser components to perform with durability and reliability in the most challenging of applications.

Parts include:

- Homogeniser Valves
- Microgap Valves
- Mushroom Valves
- Forcers
- Forcer Discs
- Valve Seats
- Impact Rings
- Pistons
- Plungers

Wall Colmonoy also offer the full manufacture of coated components through different methods such as HVOF, PTA, Spray & Fuse and Laser Clad in a range of alloys, offering replacements to Hexavalent Chromium (Chrome-6) and other common industry coatings.

Wallex® Alloys for Homogenising Components

ALLOY	C	CR	Si	W	Co	HRC	MPa	%e
6	1.1	29.0	1.25	4.5	Bal	38-43	900	1
20	2.3	31.0	1.25	16.0	Bal	49-59	620	<1
20/1040	2.0	31.0	0.75	16.0	Bal	49-56	650	<1

Wall Colmonoy's Wallex® alloys are regarded as Safe (GRAS) by the Food and Drug Administration Department of Health and Human Services (FDA) for use in food processing equipment.

MACHINE CAPABILITY AND MODERN CUTTING TECHNOLOGY

Our expert engineers will select the optimum alloy and casting technique to suit your specific needs. We offer fully machined parts and carry out machining of centrifugal, sand, investment castings and hot isostatic pressing. Machining options include:

Precision Machining

Finished to exact dimensions on a CNC Lathe, 5-Axis Mills which can meet tolerances of 0.010mm.

State-of-the-art CNC Grinding Machines

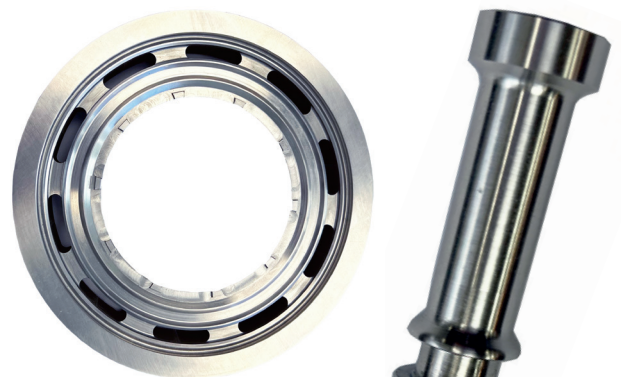
With a surface finish of 0.1 Ra / tolerance of 0.005μ.

Honing and Lapping

Machined with tolerances of 0.06 Ra, lapped surface finish honed to 0.10mm, tolerance with a surface finish of 0.2 Ra.

EDM and Wire Cutting

Comprehensive range of wire and EDM machines that can produce various shapes and sizes.



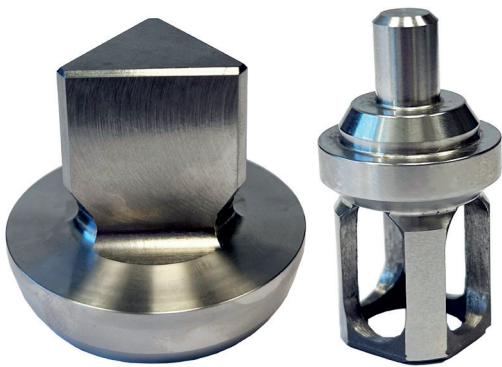
Microgap Valve



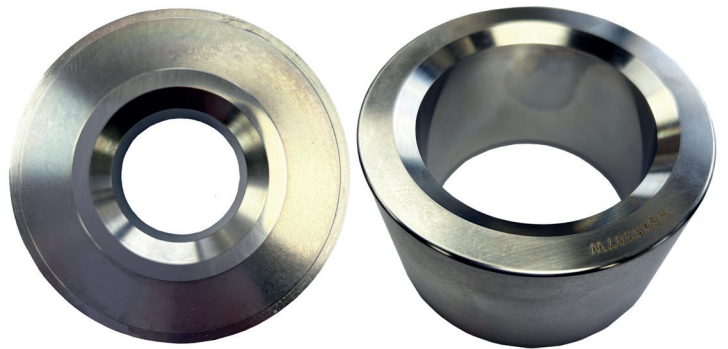
Forcer / Seat

EXPERTLY ENGINEERED COMPONENTS

Wall Colmonoy has a commitment to high quality manufacturing. With its on-site technical centre comprising of an advanced materials laboratory, non-destructive testing facility and metrology department, it offers certification to national and internationally recognised assurance standards, such as ISO 9001. Each engineered component goes through reassuringly stringent inspections at each stage of the process, so our parts are finished consistently to tight precise tolerances.



Homogeniser Valves



Valve Seats



WALLCOLMONOY

Wall Colmonoy. Making Metals Work Harder Since 1938.

EUROPEAN HEADQUARTERS

Alloy Industrial Estate | Pontardawe Swansea Wales (U.K.) SA8 4HL

Tel + 44 (0) 1792 860677 | Web precisioncomponents.wallcolmonoy.com | Email componentsales@wallcolmonoy.co.uk

MADISON HEIGHTS | LOS LUNAS | CINCINNATI | OKLAHOMA CITY | CANADA | WALES (U.K.) | FRANKLIN | SUZHOU (CHINA)

The information provided herein is given as a guideline to follow. It is the responsibility of the end user to establish the process information most suitable for their specific application(s). Wall Colmonoy assumes no responsibility for failure due to misuse or improper application of this product, or for any incidental damages arising out of the use of this material.